
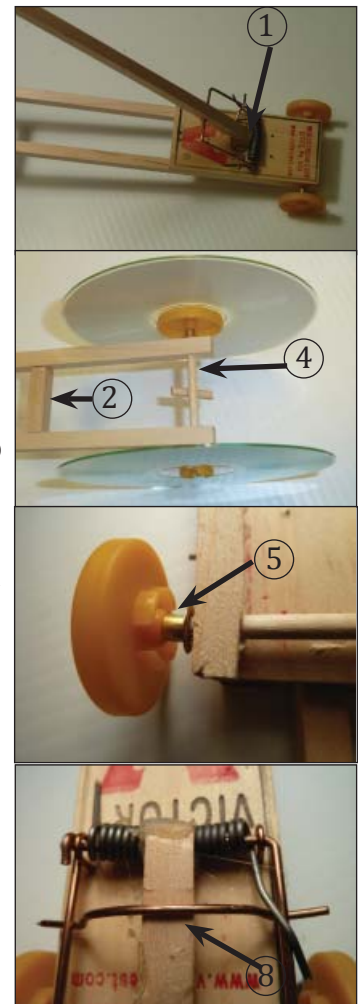


Parts List	
2 x 4mm dowel .....	Cat# 83-2002B16
1 x 36" string .....	Cat# 19-20-548
4 x CD Hub/wheels .....	Cat# 19-20-558P
2 x CD's .....	Cat# 83-1238
4 x 12" Basswood Strips ..	Cat# 83-BW08854
1 x Mousetrap .....	Cat# 19-20-541
8 x Eyelets .....	Cat# 19-20-552
2 x Balloons .....	Cat# 19-2025-00
Tools Needed	
Hot glue gun, glue, electrical or duct tape	

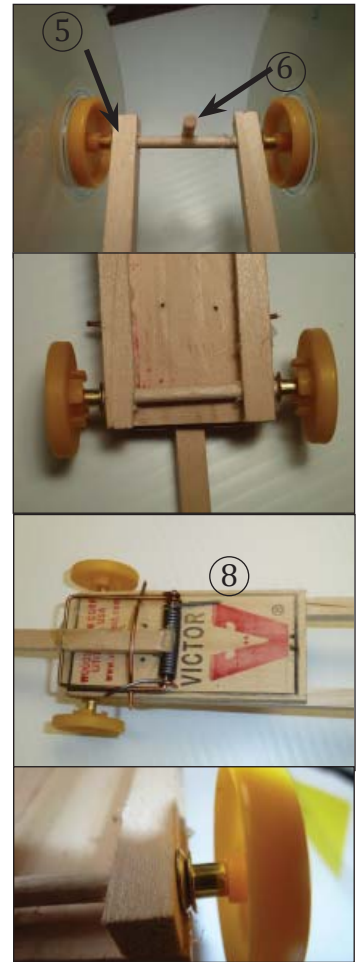
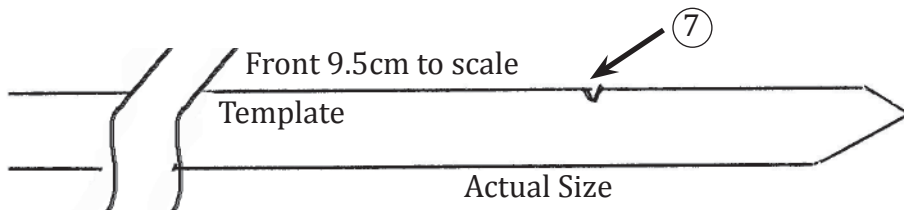
**36 Car Class Pack**  
**Cat#19-5444.....\$255.00**

1. Remove the bait pedal and tail from the mousetrap using pliers. (Reserve the tail to be used later). Place two of the 300 mm (12") basswood strips parallel to each other and hot glue the mousetrap into place at one end. The snap arm should be resting down towards the end. The sides of the basswood should be flush with the sides of the mousetrap.
2. Cut a piece of basswood 3cm (1 1/8") long. Hot glue this piece approximately 8cm from the opposite end to give the body more support.
3. Drill holes for the axles using a 3/16" drill bit. The holes should be approximately 9mm (3/8") in from both ends. (4 holes need to be drilled)
4. Cut two pieces of dowel 7cm (2 3/4") long. These will be used as axles.
5. Place one of the wheel/hubs on one end of an axle. Next place an eyelet so that the narrower end is towards the wheel/hub. Insert dowel through the both axle holes. Now place another eyelet and attach another wheel/hub. Now do the same at the other end of the car. Make sure you position the wheel/hub with the snap on area facing out on the end for the CD wheels (this is the opposite end from the mousetrap.)
6. Cut a small piece of dowel approximately 2cm (3/4") long and notch the centre slightly. Adhere this piece in the middle of the rear axle (the axle with the CD wheels). This will act as a winding anchor.  ⑥
7. Take the remaining basswood strip and cut an angle at one end. Lift the snap arm slightly and slide the basswood towards the coil. Mark the location where the snap arm meets the basswood strip. Make a slight groove in the basswood where you have it marked. (You can also use the



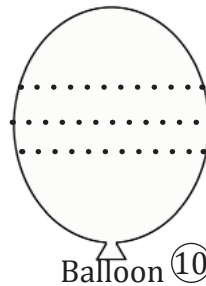
template below to cut the end and groove).

8. Now place the basswood strip under the snap arm. Take the wire tail that you have removed and make a bracket to hold this in place. Hot glue where the wood meets the coil and where the snap arm fits into the groove for extra stability. Also hot glue the tail piece.
9. Attach the string with masking tape to the far end and make a loop in the other end. You can hot glue the string before taping for added strength.
10. Cut a strip from the ballons to act as a traction band and wrap around each CD.
11. To launch the car, wrap the looped end of the string around the middle of the rear axle. Release the arm and away you go.



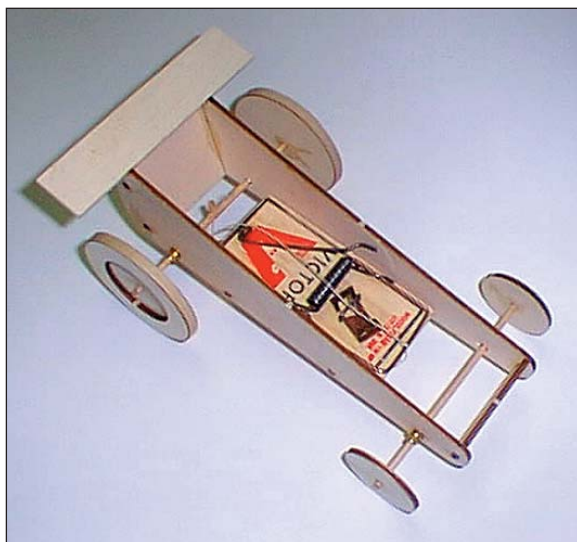
### Re-order Parts

19-20-541	Mousetraps .....	\$32.50	36/pkg
83-BW088	Basswood Strips 8mm .....	\$50.50	100/pkg
19-20-558P	CD Hub/Wheel .....	\$2.85	6/pkg
19-20-552	Eyelets.....	\$3.95	100/pkg
83-1238	CD Disk/Wheel.....	\$1.25	ea
83-2002B02	4mm Dowel .....	\$4.30	12/pkg
19-20-548	Nylon String 30yds.....	\$7.50	30 yds



Cut strips from balloon to act as tractions bands for your CD wheels.

## Laser Cut Mousetrap Car Kits (for Speed)



Individual Kits  
Cat#19-20-542.....\$13.50

12 Car Class Pack  
Cat#19-20-543.....\$129.00



Unit #20, 100 West Beaver Creek Road, Richmond Hill, ON, L4B 1H4  
Toll Free 1.800.263.3556 • Toll Free Fax 1.800.731.8424 • www.kidder.ca